

Leg Systems & Fittings



Product range:

Centre Pin Glides
Corner Plates
Folding Legs
Glides
Height Adjusters Metal
Height Adjusters Plastic
Leg Plates
Plastinails
Single Wheel Castors
Table Legs
Twin Wheel Castors
Wedges
Wing Nuts
Wood/Metal Dowel

Adjustable Legs

60mm diameter adjustable leg for supporting worktops, table-tops and desks

30mm height adjustment

Lengths shown are overall size

SLF 6000-672-46	Silver Ral9006	690mm
SLF 6000-670-09	Graphite Grey RAL7024	700mm
SLF 6000-671-01	Self Colour	710mm
SLF 6000-671-64	Chrome	710mm
SLF 6000-710-03	Matt Black RAL9005	710mm
SLF 6000-710-04	White	710mm
SLF 6000-687-03	Matt Black RAL9005	870mm
SLF 6000-687-04	White	870mm
SLF 6000-687-64	Chrome	870mm
SLF 6000-440-64	Chrome	440mm

Bulk Packed unassembled

SLF 6000-672-01 Self Colour 710mm

Other sizes and colours available to special order

Minimum quantities may apply



Adjustable Legs

80mm diameter adjustable legs for supporting worktops, table-tops and desks

710mm high with 30mm height adjustment

Lengths shown are overall size

Sold complete with screws

Raw Finish

SLF 6001-710-55	Ash
SLF 6001-710-56	Cherry
SLF 6001-710-57	Birch
SLF 6001-710-58	Beech
SLF 6001-710-59	Oak

Other sizes and colours available to special order

Minimum quantities may apply



Adjustable Legs

60mm diameter adjustable leg

100mm adjustment

Supplied in sets of 4

Comes complete with screws

650mm

SLF 6000-650-46 Grey RAL9006

680mm

SLF 6000-680-46 Grey RAL9006

Subject to a minimum of 12 sets, these legs are available in the following Ral colours RAL7035, 7037, 7031, 7024, 9016, 9005, 8019, 8017, 9006

All the above colours can be supplied in the following sizes 650mm, 680mm, 700mm and 800mm

Castors to suit above leg

SLF 6000-000-03 Black



Snap Folding Legs

Sturdy, yet stylish and elegant in design. Ideal for folding tables in hotels, restaurants, schools, universities and offices

Easily mounted under table tops

Folded, the legs are transformed into spacers, indispensable when tables are stacked, with plastic caps for protection against scratching

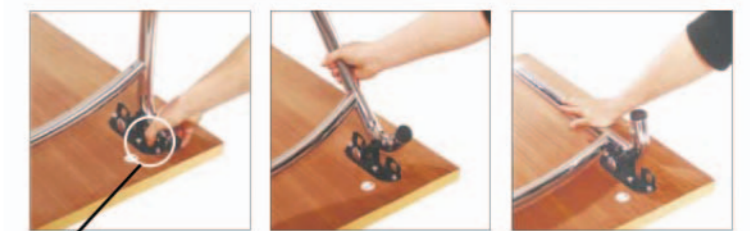
Tubular legs, 32mm diameter

Minimum table length 1000mm

SLF 0611-001-64 Chrome

Sold In pairs

Available in epoxy coated to any RAL colour, subject to a minimum quantity of 125 pairs



NB! Press spring button before folding the legs

Folding Leg

Sturdy, yet slim and elegant in design. Ideal for folding tables in hotels, restaurants, schools, universities and offices
 Suitable for tables 1400-2000mm
 719mm high
 Straight foot
SLF 2000-719-09 Graphite Grey RAL 7024
 Sold in pairs
 Other colours available to special order



Folding Leg

Sturdy, yet stylish and elegant in design. Ideal for folding tables in hotels, restaurants, schools, universities and offices
 719mm high
 Bow foot
 For 1400-2000mm tables
SLF 1000-719-46 Silver Ral 9006
SLF 1000-719-64 Chrome
 For 1200-1400mm tables
SLF 1000-719-46 Silver Ral 9006
SLF 1000-719-64 Chrome
 Other colours available to special order



Adjustable Legs

Material ABS
SLF 4004-100-03 Black 100mm
SLF 4004-150-03 Black 150mm
 You will receive half the amount of clips and brackets to legs ordered
 Screw Size – 3mm Pan



Plinth Height Adjuster

Steel outer/plastic adjuster
 Height: 30mm
 Adjustment: 20mm
SLF 0300-000-60 Zinc Plated
 Weight capacity 100kg



Steel outer/diecast inner
SLF 0300-001-60 Zinc plated
 Capacity 150kg



Twin Plate

Heavy Duty
M10 Thread
SLF 5003-000-60 Zinc Plated
With support for carcass
SLF 5003-001-60 Zinc Plated
Weight Capacity 200kg
Screw Size – 5mm Pan



Twin Plate

M8 Thread
SLF 5002-000-01 Self Colour
SLF 5002-000-60 Zinc Plated
Screw Size – 5mm Pan



Height Adjuster

M8 thread

Dimensions mm	Thread
SLF 5008-025-60 Zinc Plated	25
SLF 5008-035-60 Zinc Plated	35
SLF 5008-045-60 Zinc Plated	45
SLF 5008-050-60 Zinc Plated	50
SLF 5008-060-60 Zinc Plated	60
SLF 5008-080-60 Zinc Plated	80
SLF 5008-090-60 Zinc Plated	90
SLF 5008-100-60 Zinc Plated	100
SLF 5008-110-60 Zinc Plated	110

Plastic Cover Hood
SLF 9710-000-01 Natural
SLF 9710-000-03 Black



Screw on Plate

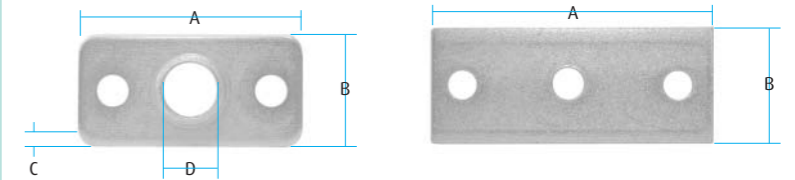
For use with threaded height adjusters in carcasses and partition walls

Dimensions mm	A	B	C	D
SLF 0167-000-60 Zinc Plated	50	20	3	M6
SLF 0167-001-60 Zinc Plated	50	20	3	M8

Weight Capacity 400kg

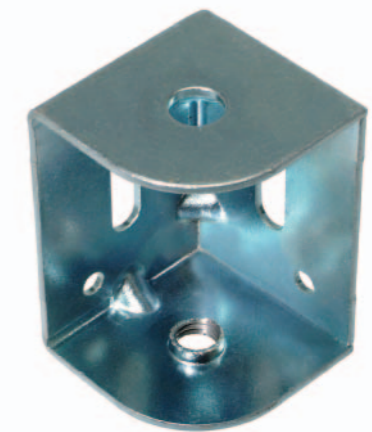
SLF 0167-002-60 Zinc Plated	40	20	2	M8
SLF 0167-003-60 Zinc Plated	40	20	2	M10

Weight Capacity 500kg



Corner Leg Bracket

Screw on angle fixing plate
M8 thread
SLF 3157-001-60 Zinc Plated
Screw Size – 4mm Pan



Corner Leg Bracket

This bracket is fixed in the corner with a carrying angle to support the carcass

M8 x 65mm

SLF 0152-000-60 Zinc Plated	RH
SLF 0152-001-60 Zinc Plated	LH

Weight Capacity 150kg

Screw Size – 5mm Pan



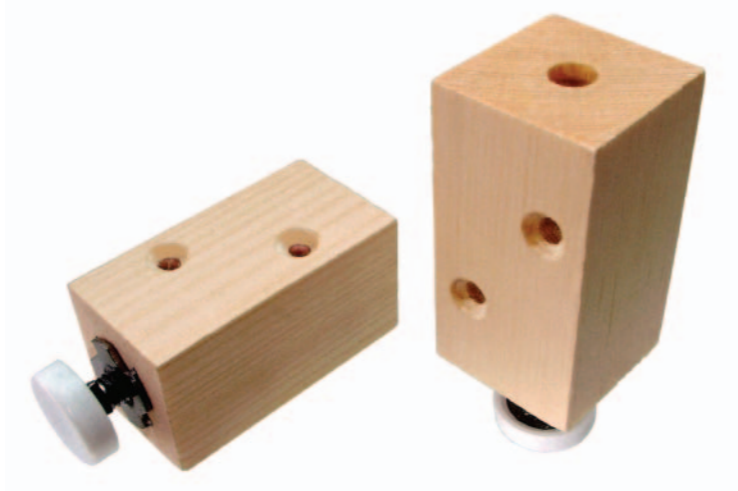
Partition Adjuster with Bracket

M10 x 50mm adjuster
SLF 0156-000-60 Zinc Plated
 Weight Capacity 350kg
 Screw Size – 5mm Pan



Plinth Adjusting Fittings

80 x 34 x 34mm
 70mm adjuster
SLF 2011-000-01 Self Colour
 55 x 34 x 34mm
 30mm Screw
SLF 2011-001-01 Self Colour
 Weight Capacity 400kg
 Screw Size – 5mm Csk



Knock in Height Adjuster

M8 x 80mm adjuster
SLF 1061-000-01 Black
 M8 x 70mm
SLF 1061-001-01 Black
 Dowes 10x12.5mm
 32 c/c



Height Adjuster

M8 x 25mm thread 25mm base
SLF 2156-000-03 Black



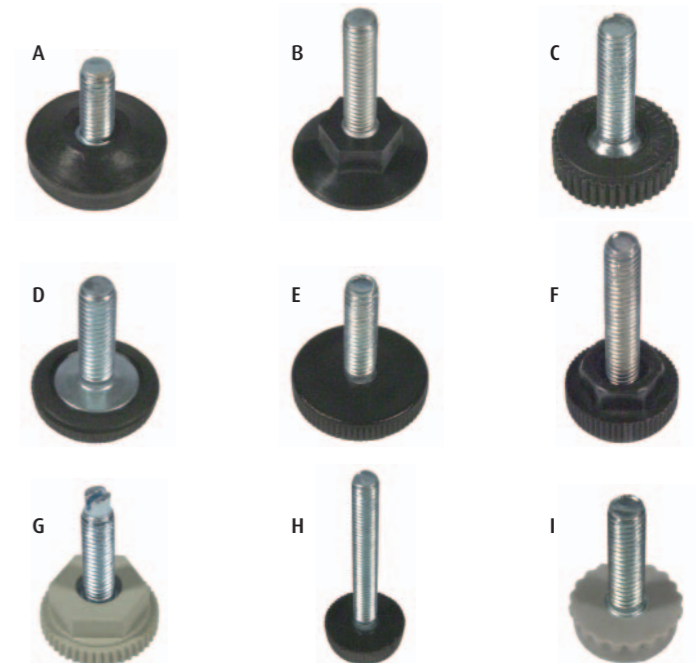
Height Adjuster

M8 x 90mm height adjuster
 7 x 22mm Black plastic foot
SLF 3159-001-60 Zinc Plated



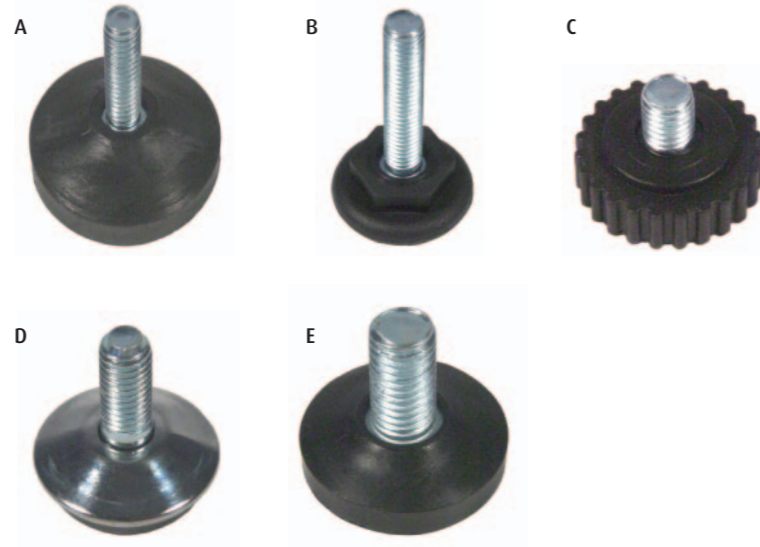
Height Adjusters

Dimensions mm	Thread	Base	
SLF 0010-615-03	Black M6x15	7x24	A
SLF 0010-625-03	Black M6x25	10x24	B
SLF 0010-622-03	Black M6x20	8x20	C
SLF 0010-620-03	Black M6x20	6x20	D
SLF 0010-623-03	Black M6x22	6x25	E
SLF 0010-627-03	Black M6x27	10x20	F
SLF 0010-633-06	Grey M6x23	11x22	G
SLF 0010-647-03	Black M6x47	6x20	H
SLF 0010-621-06	Grey M6x22	7x18	I



Height Adjusters

Dimensions mm	Color	Thread	Base	Code
SLF 0011-825-03	Black	M8x24	13x43	A
SLF 0011-838-03	Black	M8x38	12x30	B
SLF 0011-810-03	Black	M8x9	10x28	C
SLF 0011-820-61	Nickel	M8x20	11x29	D
SLF 0012-120-03	Black	M10x19	10x32	E



Height Adjuster

Can be easily adjusted by hand due to the unique rotating inner foot

Will not damage wood floors when adjusting & will not catch on carpets or tiles

Dimensions mm	Color	Thread	Base
SLF 0106-000-03	Black	M8x25	54x13

Weight Capacity 450kg



Height Adjuster

With loose foot

Dimensions mm	Color	Thread	Base
SLF 0330-000-60	Zinc Plated	M10x50	60

Weight Capacity 400kg

SLF 0330-001-60	Zinc Plated	M8x50	45
-----------------	-------------	-------	----

Weight Capacity 300kg



Height Adjuster

Can be adjusted by M4 allen key or M8 open ended spanner

Dimensions mm	Color	Thread	Base
SLF 0210-000-60	Zinc Plated	M8x70	40

Weight Capacity 250kg



Height Adjuster

Can be adjusted by M4 allen key

Dimensions mm	Color	Thread	Base
SLF 0211-000-03	Black	M8x70	32

Weight Capacity 150kg

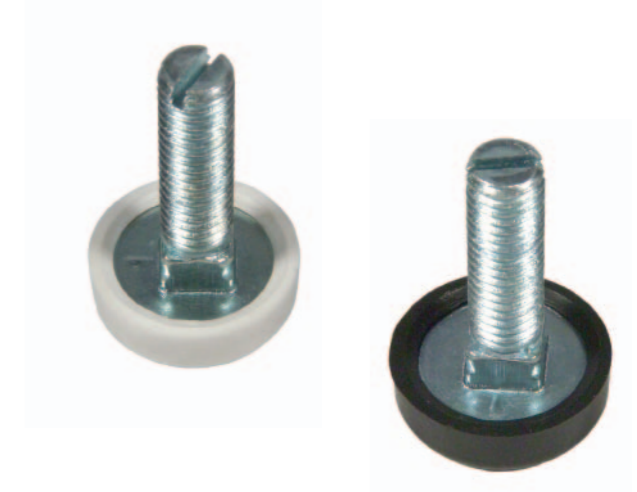


Height Adjuster

Can be adjusted by screwdriver or 8mm open ended spanner

Dimensions mm	Color	Thread	Base
SLF 0103-000-03	Black	M8x35	23
SLF 0103-000-04	White	M8x35	23

Weight Capacity 250kg



Height Adjuster

1.5mm clearance which makes this adjusting foot suitable for carcasses where minimum clearance is needed between the base and the floor

40 x 14.5mm hole

M10 x 10 mm adjustment

SLF 0360-000-03 Black

Weight Capacity 100kg



Glides

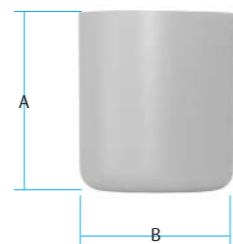
6mm Prongs

		Diameter
SLF 0234-016-61	Nickel	16mm
SLF 0234-019-61	Nickel	19mm
SLF 0234-022-61	Nickel	22mm
SLF 0234-025-61	Nickel	25mm
SLF 0234-032-61	Nickel	32mm



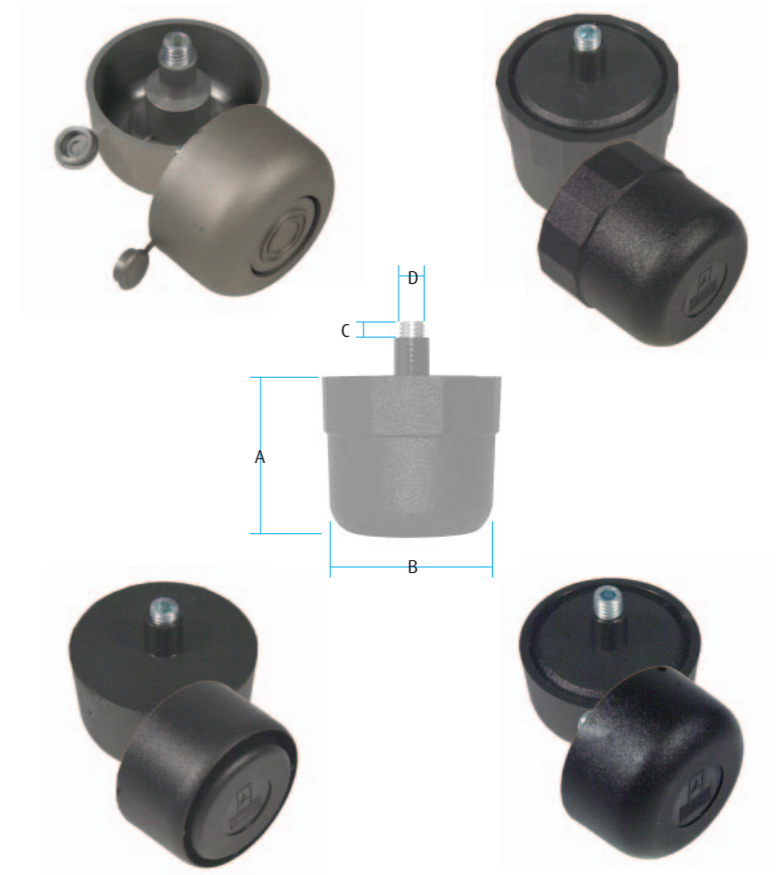
Glides

Dimensions mm		A	B	Hole
SLF 0020-020-03	Black	39	20	5
SLF 0020-045-06	Grey	40	45	5



Adjustable Glide

Dimension mm		A	B	C	D
SLF 0021-027-06	Grey	47	26	10	10
SLF 0021-000-03	Black	50	45	10	10
SLF 0022-001-03	Black	50	26	10	10
SLF 0022-001-03	Black	50	45	10	10



Wedge

Snap off to length required

1mm - 8mm Thickness

SLF 0764-000-05 Brown



Plastinails

Dimensions mm		Diameter
SLF 1875-013-01	Natural	13
SLF 1875-015-05	Brown	15
SLF 1875-016-01	Natural	16
SLF 1875-019-01	Natural	19
SLF 1875-022-01	Natural	22
SLF 1875-029-01	Natural	29



Centre Pin Glide

Steel

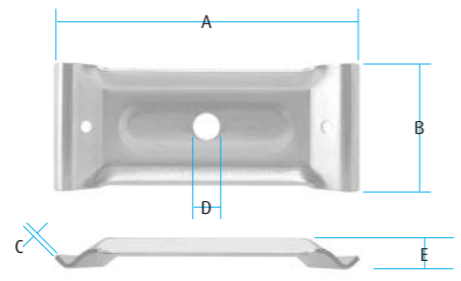
	Diameter Pin
SLF 1877-012-61	Nickel 13mm+13mm
SLF 1877-019-61	Nickel 19mm+16mm



Table Leg Plate

For bracing both side rails at each leg position
Let into groove and held on to each side rail

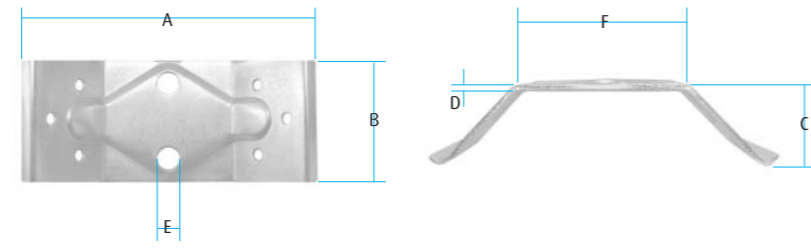
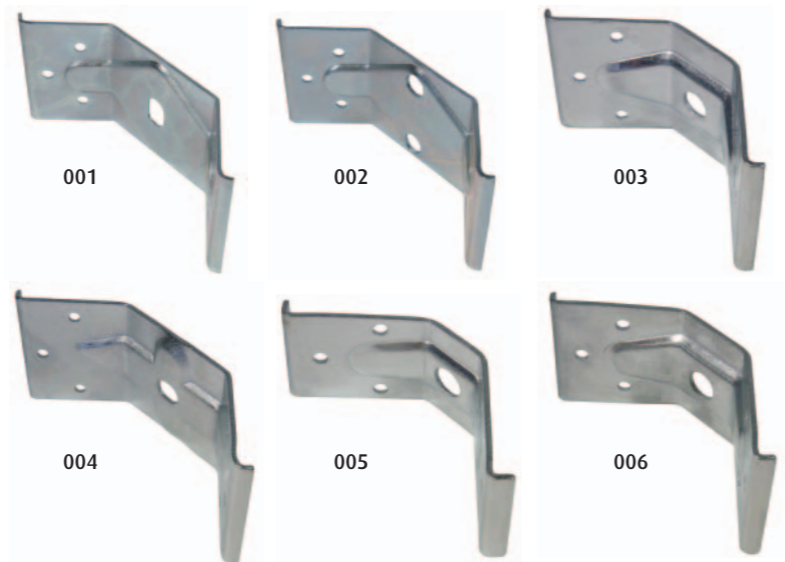
Dimension mm		A	B	C	D	E
SLF 0147-000-60	Zinc Plated	117	76	2	10	12
SLF 0147-003-60	Zinc Plated	121	50	2	10	13
SLF 0147-006-60	Zinc Plated	87	31	2	8	10



Continental Table Leg Plate

With Oval Centre Hole
Let into groove and held by screws to each side rail

Dimensions mm		A	B	C	D	E	F
SLF 0532-001-60	Zinc Plated	126	58	29	1.5	10x15	60
SLF 0532-002-60	Zinc Plated	126	58	29	2	2x10	60
SLF 0532-003-60	Zinc Plated	111	60	34	2	10	32
SLF 0532-004-60	Zinc Plated	140	59	35	2	10x12	59
SLF 0532-005-60	Zinc Plated	116	40	38	2	10	24
SLF 0532-006-60	Zinc Plated	111	50	35	2	10	30



D = material thickness

Dowel Screw

SLF 0147-009-60	Zinc Plated	3" x 1/4"w
SLF 0147-012-20	Yellow Zinc	M8 x 100mm
SLF 0147-070-20	Yellow Zinc	M10 x 70mm
SLF 0147-070-60	Zinc Plated	M10 x 70mm
SLF 0147-100-20	Yellow Zinc	M10 x 100mm
SLF 0147-004-60	Zinc Plated	M8 x 70mm
SLF 0147-014-60	Zinc Plated	M8 x 50mm
SLF 0147-650-60	Zinc Plated	M6 x 50m



Wing Nuts

SLF 0147-005-60	Zinc Plated	M8
SLF 0147-007-60	Zinc Plated	M6
SLF 0147-010-60	Zinc Plated	M10



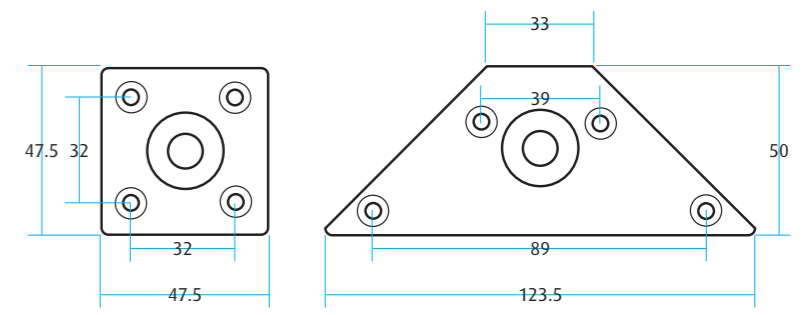
Dowel Inserting Tool

For use with wood/metal dowels
SLF 0148-008-01 Self colour M8
SLF 0148-010-01 Self colour M10



Leg Fitting

22 x 15mm Screw in bush
The leg sockets allow you to tighten and adjust your table leg in any position due to the patented internal sprung thread
Bush 22 x 15mm
SLF 0149-008-60 Zinc Plated M8
SLF 0149-009-60 Zinc Plated M10
Corner
SLF 0149-010-60 Zinc Plated M8
SLF 0149-011-60 Zinc Plated M10
Square
SLF 0149-012-60 Zinc Plated M8
SLF 0149-013-60 Zinc Plated M10



Twin Wheeled Castor

40mm Black Polypropylene wheels with Nylon Hood
 4 castors
 Static Load Capacity 100kg
 Supplied with square plate 30 x 30mm
SLF 0046-100-03 Black Un-braked
 Supplied with pivot M8 x 12mm
SLF 0046-120-03 Black Un-braked
 Packed in sets of 4 with 30 x 12 x 10mm socket
SLF 0046-132-03 Black Un-braked



Twin Wheeled Castor

50mm Black Polypropylene wheels with Nylon Hood
 4 castors
 Static Load Capacity 120kg
 45 x 45mm square plate
SLF 0056-001-03 Black Un-braked
SLF 0056-100-03 Black Braked
 Screw Size – 4mm Pan
 M8 x 15mm Pivot
SLF 0056-110-03 Black Braked
SLF 0056-111-03 Black Un-braked



Single Wheel Castor

Dimensions mm	A	B	C	Weight	Brake	
SLF 0058-000-03	Black	27	36	38	30kg	Unbraked
SLF 0058-000-17	Silver	27	36	38	30kg	Unbraked

Pivot
SLF 0058-100-60 Zinc Plated M8 x 15mm

Square plate
SLF 0058-105-60 Zinc Plated 28 X 28mm

Dimensions mm	A	B	C	Weight	Brake	
SLF 0058-001-03	Black	31	46	42	50kg	Unbraked
SLF 0058-001-17	Silver	31	46	42	50kg	Unbraked

Pivot
SLF 0058-106-60 Zinc Plated M8 x 15mm

Square plate
SLF 0058-112-60 Zinc Plated 38 X 38mm

Dimensions mm	A	B	C	Weight	Brake	
SLF 0058-002-03	Black	39	54	52	70kg	Unbraked
SLF 0058-002-17	Silver	39	54	52	70kg	Unbraked

Pivot
SLF 0058-113-60 Zinc Plated M8 x 15mm

Square plate
SLF 0058-117-60 Zinc Plated 38 X 38mm



Single Wheel Castors

Heavy Duty

Dimensions mm	Wheel	Width	Height	Brake	
SLF 0057-000-03	Black	50	62	60	Unbraked
SLF 0057-001-03	Black	50	62	60	Braked

Pivot
SLF 0057-100-60 Zinc Plated M8 x 15mm

Square plate
SLF 0058-105-60 Zinc Plated 38 X 38mm
SLF 0058-106-60 Zinc Plated 42 X 42mm

Weight Capacity 120kg



Twin Wheeled Castor

Plastic body (Polyamide)
 Rubber wheels (Thermoplastic Rubber)
 75mm Wheels
 Unbraked
SLF 0060-000-46 Silver Ral9006
 Braked
SLF 0060-001-46 Silver Ral9006
 Pivot
SLF 0060-002-60 Zinc Plated M10x25
 Weight Capacity 80kg



Twin Wheel Castor

Aluminium body
 Rubber Tyres (Thermoplastic rubber)
 75mm Wheels
 Unbraked
SLF 0061-000-46 Silver Ral9006
 Braked
SLF 0061-001-46 Silver Ral9006
 Pivot
SLF 0061-002-60 Zinc Plated M10x25
 Weight capacity 100kg



Twin Wheel Castor

Plastic body (Polyamide)
 Rubber wheels (Thermoplastic rubber)
 65mm Wheels
 Unbraked
SLF 0062-000-06 Grey
 Braked
SLF 0062-001-06 Grey
 Square plate 38x38mm
SLF 0062-002-60 Zinc Plated
 Weight capacity 50kg

**Twin Wheel Castor**

Plastic body and wheel centre (Polyamide)
 Polyurethane wheel 100mm Diameter
 Precision ball-bearings in swivel head
 Comes complete with M10 x 17mm Pivot
 Unbraked
SLF 0063-000-07 Beige
 Braked wheel and pivot (Total Lock)
SLF 0063-001-07 Beige
 Weight capacity 100kg

**Box Castors**

SLF 0252-000-60 Zinc Plated
 Screw Size – 4mm Pan

**Box Castors**

Wheel 13x14mm
 ZP Plate 26mm
SLF 0253-000-03 Black

**Corner Castor**

29mm Wheel
SLF 0050-027-01 Self colour
 Screw Size – 4mm Pan

**Fork Castors**

Braked

Dimensions mm		Wheel	Height	
SLF 0812-05-60	Zinc plated	50x16	72	50kg Braked
SLF 0812-05-60	Zinc plated	50x16	72	50kg Un-braked
SLF 0812-05-60	Zinc plated	75x21	104	70kg Braked
SLF 0812-05-60	Zinc plated	75x21	104	70kg Un-braked



Leg

42 x 150mm
M10 x18mm Screw
SLF 3095-150-62 Matt Nickel
Screw Size - 4mm Pan



Leg

44 x 167mm
90 x 90 x 2mm Plate
SLF 3056-165-06 Grey
Screw Size - 5mm Csk



Insert Adjuster

Suitable for 18mm Board
25mm adjustment
SLF 0306-000-01 Self colour
Black cap for base of adjuster
SLF 0306-001-03 Black
Weight Capacity 300kg



Notes

Lined area for notes.