

**NEW
PRODUCTS
ADDED**



- LOW TRADE PRICES
- FREE DELIVERY £150 (NET)
- NO MINIMUM ORDER CHARGE
- NO SPLIT PACKAGE CHARGE
- EXCELLENT CUSTOMER SERVICE

www.unico.uk.com



CATCHES AND BOLTS 3-4

LOCKS 5-9

HINGES 10-12

DRAWER SLIDES 13-15

STAYS 16

KD FITTINGS 16-18

WARDROBE & SHELF FITTINGS 19-20

GLASS & WOODEN DOOR FITTINGS 21-22

TABLE FITTINGS 23

LEG SYSTEMS 24

See online for our FULL range
www.unico.uk.com

Established in 1970, Unico Components Ltd is proud to serve a wide variety of British furniture manufacturers with a comprehensive fittings solution for their products. Our mini catalogue shows just a few of the products available from our enormous range.

We are also sole agents for a number of leading furniture fittings manufacturers from around the world.

We are proud to offer our customers a responsive, reliable and flexible service whilst providing competitive prices and prompt delivery.

Should you be unable to find the right component to suit your needs then please see our full range at www.unico.uk.com or alternatively why not **Call The Experts on 01483 237621.**

FINISHES

- BE** Beige
- BL** Black
- BR** Brown
- CP** Chrome Plated
- EB** Brass Plated
- FB** Bronze Plated
- GR** Grey
- MB** Matt Brass
- MCP** Matt Chrome Plated
- MNP** Matt Nickel Plated
- NP** Nickel Plated
- PA** Polished Aluminium
- PB** Polished Brass
- SC** Self Colour
- SS** Stainless Steel Finish
- WH** White
- YZ** Yellow Zinc Plated
- ZP** Zinc Plated



SCAN WITH YOUR PHONE TO VISIT OUR WEBSITE



LOCK CATALOGUE
REQUEST ONE NOW!

UK AGENTS FOR:



NEED ADVICE? EMAIL: sales@unico.uk.com
 CALL: **01483 237621**

Screw on Magnetic Catch



4kg rated pull
SCA201200120 EB
SCA201200261 NP

Single Magnetic Tutch Latch



SCA900300003 BL

Screw On Striker



UCA012001160 ZP

Raly Series Magnetic Catch



With Self Aligning Striker
UCA011800004 WH 5kg Pull
UCA011800005 BR 5kg Pull
UCA011900004 WH 6kg Pull
UCA011900005 BR 6kg Pull

CATCHES & BOLTS

Self Aligning Striker for 2012 Catches



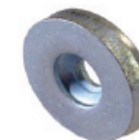
SCA119900220 EB
SCA119900161 NP

Double Magnetic Tutch Latch



SCA501300003 BL

Screw On Striker



UCA012000160 ZP

Screw On Strikers



UCA010700160 ZP 1 Hole
UCA010700360 ZP 2 Hole

Mini Push Latch



Push door to close and push again to open.

SCA000200104 NP

Double Ball Catch



UCA011700021 EB

Toggle Catch & Plate



UCA011400061 NP

Necked Bolt With Keep



UCA063700064 CP

Cranked Steel Slide Bolt



50mm long, 20mm throw.

SCA036000061 NP

Locator Catch



SCA091900002 SC

Toggle Catch & Plate

UCA011500020 YZ
UCA011500040 FB
UCA011500050 SS
UCA011500060 ZP



Heavy Duty Toggle Catch & Plate



UCA011600060 ZP

Steel Slide Bolt



70mm long, 13mm throw.

SCA037000020 EB
SCA037000061 NP

Angle Striker



SCA037000120 EB
SCA037000161 NP

SEE OUR ENTIRE RANGE ONLINE:
www.unico.uk.com

Push Bar Espagnolette Lock

Complete with 2 fob keys, 2 x 1m bars, 4 bar saddles and 2 bar location sockets. 19x22mm nozzle.

SLO020100064 NP Differ
SLO020100164 NP KA



Rectangular Espagnolette Lock



Complete with 2 fob keys, rosette, 2 hooks and holders, 2 bar saddles and 2 strikers. Bars ordered separately. 15mm backset. 16.5x20mm nozzle. RH.

SLO023720061 NP Differ

Rectangular Espagnolette Lock

15mm backset.

SLO023620061 NP RH
SLO023620161 NP LH
SLO023620040 FB RH
SLO023620140 FB LH



Metal Hooks for Espagnolette Lock Bars

SLO126203761 NP RH
SLO126203861 NP LH
SLO126206740 FB RH
SLO126206840 FB LH



Hook Saddles for SLO1262 Hooks

SLO122501161 NP
SLO122501440 FB



Bar Saddle with Cover

SLO122401161 NP
SLO122401440 FB



Screw In Metal Striker

SLO133800260 ZP
SLO133801240 FB



Metal Espagnolette Lock Bars

6mm diameter 'D' profile bar. 2m long.

ULO123280361 NP
SLO123281740 FB



Mortice Lock for Tambour Door



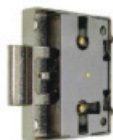
Non mastered. Keyed alike. 80mm face plate. Complete with 2 steel keys.

- SLO013301161** NP Lock body
- SLO013310061** NP Cylinder
- ULO118100161** NP Striker

Universal Box Lock

LH, RH and drawer lock. Keys and strikers sold separately.

- SLO040701561** NP 15mm Backset
- SLO040702061** NP 20mm Backset
- SLO040702561** NP 25mm Backset



Square Drawer Lock



Complete with 2 keys and rosette. 200 differs. 19x22mm nozzle. Non mastered.

- SLO042500220** EB Differ
- SLO042500264** CP Differ
- SLO042500464** CP KA

Square Slam Drawer Lock



Complete with rosette, striker plate and 2 fob keys. 200 differs. 19x22mm nozzle. Non mastered.

- SLO042400061** NP Differ
- SLO042400161** NP KA

Universal Mortice Lock

LH, RH and drawer lock. Keys and strikers sold separately.

- SLO000400020** EB 15mm Backset
- SLO000400120** EB 25mm Backset



Screw On Cupboard Lock



Complete with 2 steel keys.

- ULO016001160** ZP 6mm Nozzle Differ
- ULO016001260** ZP 16mm Nozzle Differ
- ULO016001360** ZP 22mm Nozzle Differ
- ULO016000360** ZP 22mm Nozzle KA
- ULO016005060** ZP 16mm Master Key
- ULO016005160** ZP 22mm Master Key
- ULO015201361** NP 16.5mm Rosette

Square Cupboard Lock



Complete with 2 steel keys and rosette. 16.5x23mm nozzle. Mastered.

- SLO042590161** NP RH Differ
- SLO042590661** NP LH Differ
- SLO042591161** NP RH KA
- ULO158500161** NP 6806LM Master Key

Drawer Lock



Complete with 2 keys. 22x22mm nozzle. 200 differs.

- ULO016101103** BL Differ MK
- ULO016103103** BL Differ N/MK
- ULO016103203** BL KA 92312
- ULO016103303** BL KA 92250
- ULO016105060** NP Master Key
- ULO016100560** NP 22mm Rosette

Roller Shutter Claw Lock

Complete with 2 fob keys, rosette and flat striker plate. 19x22mm nozzle. Non mastered.

- ULO016610061** NP Differ
- ULO016610161** NP KA



Cam Lock



Complete with 2 steel keys, rosette and cam. RH. 16.5x20mm nozzle. Mastered.

- ULO082790261** NP 25mm Cam Differ
- ULO082790361** NP 25mm Cam KA
- ULO082790661** NP 36mm Cam Differ
- ULO158500161** Master Key 6806LM

Threaded Cam Lock

Complete with 2 keys, hooked cam, nut and washer. Either 25mm or 30mm thread. RH.

- ULO192500064** CP 25mm Differ
- ULO192500264** CP 25mm KA
- ULO193000064** CP 30mm Differ
- ULO193000164** CP 30mm KA



4 Dial Code Scramble Lock



Cam, Slam, Push Bar and SVS3 versions also available. Backplate included. Master key sold separately.

- SLO610005003** BL Dial Lock RH
- SLO610005161** NP 30mm Flat Cam

Angle Striker Plate

- ULO015100261** NP



Flap Lock

Press and turn movement. 19x24mm nozzle. Non mastered. Complete with 2 fob keys, rosette and striker.

- ULO039240264** CP Differ



Padlock Handle Threaded Cam Lock



For wooden furniture. 20mm thread supplied with a 40mm cam. 32mm thread supplied with a 33.5mm cam.

- ULO001100161** NP 19x20mm Thread
- ULO001100061** NP 19x32mm Thread

One Wing Pedestal Lock

Complete with 2 steel keys and rosette. 45mm pin. 16.5x20mm nozzle. Mastered.

- ULO016591763** NP Differ
- ULO016591863** NP KA



Two Wing Pedestal Lock



Complete with 2 steel keys and rosette. 45mm pin. 16.5x20mm nozzle. Mastered.

- ULO016591663** NP Differ
- ULO016591163** NP KA
- ULO158500161** NP Master Key 6806LM

Angle Striker Plate

- SLO941100161** NP



Huwil VCS18 Removable Cylinders



Huwil removable cylinders. For 18mm diameter locks.

- ULO015800061** NP Differ N/MK
- ULO015801061** NP KA N/MK
- ULO015810061** NP Sets 3101-3110A
- ULO015899461** NP Differ 3A-9Z Mastered
- ULO015899961** NP Differ TA Series Mastered
- ULO015801361** Wire Cylinder Release Key

SVS3 Anti Tilt System

Prevents 2 or more drawers from opening simultaneously.



One Wing Pedestal Lock Housing SVS3

18x22mm nozzle. 38mm pin.

ULO095256261 NP



Pedestal Lock for SVS3



16.5x20mm. 39mm pin.

- ULO016542063** NP Differ Steel Keys
- ULO016542363** NP Differ Hinge Keys
- ULO016541963** NP KA Steel Keys

Pedestal Lock for SVS3 No Nose



16.5x20mm nozzle. 42mm pin. No upstand on pin.

- ULO016542763** NP Differ
- ULO016543163** NP KA

Universal Cupboard Lock Housing

LH or RH. 18x22.5mm nozzle.

ULO042511163 NP



Sliding Door Lock Housing

Suitable for wooden doors. 28x19mm nozzle.

ULO015611163 NP



One Wing Pedestal Housing

18x22mm nozzle. 40mm pin.

ULO016511303 BL



Two Wing Pedestal Lock Housing

18x22mm nozzle. 40mm pin.

ULO016511163 NP



Threaded Pedestal Lock Housing

Complete with spacer. 29mm thread. 45mm pin.

ULO087352561 NP



Espagnolette Push Bar Lock Housing

18x23mm nozzle.

SLO020700161 NP



Rosette

- ULO015201361** NP 16.5mm
- ULO015801261** NP 18mm
- ULO016100560** NP 22mm



Lehmann/MLM Removable Cylinders

Complete with 2 steel keys.

- ULO015870661** NP 16.5mm Differ
- ULO015871261** NP 16.5mm KA
- ULO015809761** NP 18mm Differ
- ULO015809561** NP 18mm KA



MLM Drawer/Cupboard Lock Housing

20mm nozzle. 20mm backset.

- ULO042511861** NP 16.5mm Drw
- ULO042512261** NP 16.5mm RH
- ULO042512161** NP 18mm Drw
- ULO042511961** NP 18mm RH



MLM 29mm Straight Cam

ULO082701061 NP



MLM Narrow Frame Lock Housing

20mm nozzle.

- ULO042512461** NP 16.5mm Drw
- ULO042512561** NP 16.5mm RH
- ULO042512061** NP 18mm Drw
- ULO042512361** NP 18mm RH



MLM Glass Door Lock Housing

18mm. RH. 26mm hole required. For locking single glass doors.

ULO143200061 NP



MLM Lockable Turn Knob

18mm. RH. Knobs can be used in the majority of the Lehmann range.

SLO029200461 NP



MLM Slam Lock Housing

18mm. Also available with 16.5mm nozzle. 25mm backset. RH.

- SLO042450061** NP
- SLO042451061** NP Key Retention



MLM Cam Lock Housing

22mm nozzle. RH. Cams sold separately.

- ULO082711761** NP 16.5mm
- ULO082711561** NP 18mm



MLM 28mm Hooked Cam

ULO082700961 NP



MLM Espagnolette Lock Housing

18mm. LH or RH. Key retention optional. 16.5mm nozzle also available. See page 5 for Espagnolette fittings.

- SLO023711761** NP 15mm Backset
- SLO023711861** NP 25mm Backset



MLM Universal Rim Lock Housing

LH or RH.

- SLO042300061** NP 16.5mm 15mm B/S
- SLO042300161** NP 16.5mm 20mm B/S
- SLO042300261** NP 18mm 15mm B/S
- SLO042300361** NP 18mm 20mm B/S



SEE OUR ENTIRE RANGE ONLINE:
www.unico.uk.com

98° Slide On Mini Hinge & Plate

NEW

26mm cup. Without Euroscrews. 0mm plate. 2mm plate with inset hinge.

- UHI196100161** NP Full Overlay
- UHI196100261** NP Half Overlay
- UHI196100361** NP Inset 2mm Plate



110° Slide On Maxi Hinge & Plate

NEW

35mm cup. Without Euroscrews. 2mm plate. 4mm plate with inset hinge.

- UHI358100161** NP Full Overlay
- UHI358100261** NP Half Overlay
- UHI358100361** NP Inset



165° Slide On Hinge & Plate

NEW

35mm cup. Without Euroscrews. 2mm plate. Full overlay.

- UHI386900161** NP



100° Clip On Soft Close Mini Hinge

26mm cup. Complete with plate. Soft close function integrated into the arm of the hinge. 0mm plate. 2mm plate with the inset hinge.

- UHI120100061** NP Full Overlay
- UHI120100161** NP Half Overlay
- UHI120100261** NP Inset



100° Clip On Soft Close Maxi Hinge

35mm cup. Complete with plate. Soft close function integrated into the arm of the hinge. 0mm plate.

- UHI120000061** NP Full Overlay
- UHI120000161** NP Half Overlay
- UHI120000261** NP Inset



110° Clip On Hinge

35mm cup.

- SHI024811061** NP Full Overlay
- SHI024853361** NP Half Overlay
- SHI024853461** NP Inset



110° Clip On Soft Close Mechanism

Clip on mechanism for use with the SHI0248 110° clip on hinge.

- SHI095100061** NP



170° Clip On Hinge 0mm

35mm cup.

- SHI024817061** NP



Hinge Plate for 110° and 170° Clip On Hinges

Complete with euroscrews. For use with the 110° and 170° clip on hinges.

- SHI024400061** NP 0mm
- SHI024400261** NP 3mm



165° Clip on Soft Close Hinge

35mm cup. Complete with plate. Soft close function integrated into the arm of the hinge.

- UHI386800561** NP



100° Push To Open Hinge & Plate

35mm cup.

- UHI006010061** NP Full Overlay
- UHI006010161** NP Half Overlay
- UHI006010261** NP Inset



270° Hinge

Sprung. Suitable for door thickness of 16-24mm.

- SHI024827061** NP



0mm Hinge Plate for 270° Hinge

Complete with 13mm Euroscrews. For use with the 270° hinge.

- SHI024484861** NP



Push To Open Plunger

26-46mm Adjustable extension.

- UHI006000303** BL



Push To Open Magnetic Plunger

26-46mm Adjustable extension.

- UHI006000206** BL



95° Hinge For Up To 32mm Doors

NEW

35mm cup. Suitable for door thickness up to 32mm.

- UHI077671061** NP Full Overlay
- UHI077671261** NP Inset



95° Hinge For Up To 43mm Doors

NEW

40mm cup. Suitable for door thickness up to 43mm.

- UHI073925061** NP Full Overlay
- UHI073926061** NP Half Overlay
- UHI073927061** NP Inset



0mm Hinge Plate

NEW

For use with the 95° hinges.

- UHI131000161** NP



Soft Close Damper

- SKF368100006** GR 10x50mm Damper
- SKF368100106** GR Damper Housing



SEE OUR ENTIRE RANGE ONLINE:
www.unico.uk.com

Sprung Mignon Hinge



UHI024110061 NP

Cylinder Hinge



Diameter 10mm - 18mm.

UHI060201021 EB 10mm
UHI060201221 EB 12mm
UHI060201421 EB 14mm
UHI060201621 EB 16mm
UHI060201821 EB 18mm

Solid Drawn Brass Butt Hinge



UHI060100001 SC 38x22mm
UHI060100101 SC 51x28mm
UHI060100201 SC 63x35mm

Flap Hinge



30x80x2mm

UHI151100024 MB

Flush Hinge

SHI026600120 EB 51x24mm
SHI026600160 ZP 51x24mm
SHI026600161 NP 51x24mm
SHI026600164 CP 51x24mm
SHI026600220 EB 63x25mm
SHI026600260 ZP 63x25mm
SHI026600261 NP 63x25mm
SHI026600264 CP 63x25mm
SHI026600320 EB 76x33mm
SHI026600360 ZP 76x33mm
SHI026600364 CP 76x33mm



Continuous Piano Hinge

1829mm Long. 60mm Hole centres. 0.66mm Thick.



UHI065421020 EB 25mm Open
UHI065420061 NP 25mm Open
UHI065421120 EB 32mm Open
UHI065421161 NP 32mm Open
UHI065421220 EB 38mm Open
UHI065421261 NP 38mm Open

Single Cranked Hinge



For 16mm or 19mm doors.

SHI036500120 EB 16mm
SHI036500161 NP 16mm
SHI036500220 EB 19mm
SHI036501261 NP 19mm

Double Cranked Hinge



180° Opening. To suit 15-16mm doors.

SHI550300020 EB

Ballbearing Full Extension Side Fix Slides



Non-handed and 32mm hole pattern for easy installation. Max weight 45kg. Sold in pairs. 12.5mm building in width.

UDS840011060 ZP 250mm
UDS840011260 ZP 300mm
UDS840011460 ZP 350mm
UDS840011660 ZP 400mm
UDS840011860 ZP 450mm
UDS840012060 ZP 500mm
UDS840012260 ZP 550mm
UDS840012460 ZP 600mm
UDS840012660 ZP 650mm
UDS840012860 ZP 700mm

Soft Close Full Extension Side Fix Slides



Soft Close. Non-handed and 32mm hole pattern for easy installation. Weight 45kg. Sold in Pairs. 12.5mm building in width.

UDS845011260 ZP 305mm (12")
UDS845011460 ZP 356mm (14")
UDS845011660 ZP 406mm (16")
UDS845011860 ZP 457mm (18")
UDS845012060 ZP 508mm (20")
UDS845012260 ZP 559mm (22")

Ballbearing Single Extension Slides 17mm



Light duty. For 17mm groove and surface mounting. Max weight 8kg. Sold in pairs.

SDS121701960 ZP 187mm
SDS121702260 ZP 219mm
SDS121702560 ZP 251mm
SDS121702860 ZP 283mm
SDS121703160 ZP 315mm
SDS121703760 ZP 376mm
SDS121704360 ZP 430mm

Ballbearing Over Extension Side Fix Slides



These slides open 25mm (1") further than the Full Extension slides. Max weight 45kg. Sold in pairs. 12.5mm building in width.

UDS840511060 ZP 254mm (10")
UDS840511260 ZP 305mm (12")
UDS840511460 ZP 356mm (14")
UDS840511660 ZP 406mm (16")
UDS840511860 ZP 457mm (18")
UDS840512060 ZP 508mm (20")
UDS840512260 ZP 559mm (22")
UDS840512460 ZP 610mm (24")
UDS840512660 ZP 660mm (26")
UDS840512860 ZP 711mm (28")

Push To Open Full Extension Side Fix Slides



Push to open. Weight 40kg. 12.8mm building in width.

UDS860011260 ZP 300mm
UDS860011460 ZP 350mm
UDS860011660 ZP 400mm
UDS860011860 ZP 450mm
UDS860012060 ZP 500mm
UDS860012260 ZP 550mm
UDS860012460 ZP 600mm

Ballbearing Single Extension Slides 27mm



Light duty. For 27mm groove and surface mounting. Max weight 15kg. Sold in pairs.

SDS272721460 ZP 214mm
SDS272702560 ZP 246mm
SDS272702860 ZP 278mm
SDS272703160 ZP 310mm
SDS272703460 ZP 342mm

Roller Drawer Slides Side Fix



32mm hole pattern. Max weight 25kg. Sold in pairs. 12.5mm building in width. Single extension.

- SDS121130004** WH 300mm
- SDS121130005** BR 300mm
- SDS121135004** WH 350mm
- SDS121135005** BR 350mm
- SDS121140004** WH 400mm
- SDS121140005** BR 400mm
- SDS121145004** WH 450mm
- SDS121145005** BR 450mm
- SDS121150004** WH 500mm
- SDS121150005** BR 500mm
- SDS121155004** WH 550mm
- SDS121155005** BR 550mm

Plastic Drawer Slides



With dowels and screw holes for secure fixing. Sold in singles.

- SDS181825001** SC 250mm
- SDS181832001** SC 320mm
- SDS181635001** SC 350mm

Roller Drawer Slides Bottom Fix



32mm hole pattern. Max weight 25kg. Sold in pairs. 12.5mm building in width. Single extension.

- SDS121230004** WH 300mm
- SDS121230005** BR 300mm
- SDS121235004** WH 350mm
- SDS121235005** BR 350mm
- SDS121240004** WH 400mm
- SDS121240005** BR 400mm
- SDS121245004** WH 450mm
- SDS121245005** BR 450mm
- SDS121250004** WH 500mm
- SDS121250005** BR 500mm
- SDS121255004** WH 550mm
- SDS121255005** BR 550mm
- SDS121260004** WH 600mm

Pan Drawer Slides



Single extension. Max weight 30kg.

86mm High

- SDS120935004** WH 350mm
- SDS120940004** WH 400mm
- SDS120945004** WH 450mm
- SDS120950004** WH 500mm
- SDS120955004** WH 550mm

150mm High

- SDS120840004** WH 400mm
- SDS120845004** WH 450mm
- SDS120850004** WH 500mm
- SDS120855004** WH 550mm

Soft Close Full Extension Bottom Fix Slides



Max weight 30kg. Sold in pairs.

- UDS260000003** BL RH Adj Catch
- UDS260000103** BL LH Adj Catch
- UDS260011260** ZP 300mm
- UDS260011460** ZP 350mm
- UDS260011760** ZP 400mm
- UDS260011960** ZP 450mm
- UDS260012160** ZP 500mm
- UDS260012360** ZP 550mm
- UDS260012560** ZP 600mm

Push To Open Bottom Fix Slides

NEW



Full extension. Max weight 25kg. Sold in pairs.

- UDS261125060** ZP 250mm
- UDS261130060** ZP 300mm
- UDS261135060** ZP 350mm
- UDS261140060** ZP 400mm
- UDS261145060** ZP 450mm
- UDS261150060** ZP 500mm
- UDS261155060** ZP 550mm
- UDS261160060** ZP 600mm

135mm High Modern Box

NEW



Set comprises of 2 x Drawer Sides, 2 x Full Extension Drawer Slides, 2 x Front Connectors and 2 x Rear Connectors. Max weight 40kg.

- SDS913525006** GR 250mm
- SDS913530006** GR 300mm
- SDS913535006** GR 350mm
- SDS913540006** GR 400mm
- SDS913545006** GR 450mm
- SDS913550006** GR 500mm
- SDS913555006** GR 550mm

Soft Close Bottom Fix Slides

NEW



Full extension. Max weight 25kg. Sold in pairs.

- UDS261025060** ZP 250mm
- UDS261030060** ZP 300mm
- UDS261035060** ZP 350mm
- UDS261040060** ZP 400mm
- UDS261045060** ZP 450mm
- UDS261050060** ZP 500mm
- UDS261055060** ZP 550mm
- UDS261060060** ZP 600mm

84mm High Modern Box

NEW



Set comprises of 2 x Drawer Sides, 2 x Full Extension Drawer Slides, 2 x Front Connectors and 2 x Rear Connectors. Max weight 40kg.

- SDS908425006** GR 250mm
- SDS908430006** GR 300mm
- SDS908435006** GR 350mm
- SDS908440006** GR 400mm
- SDS908445006** GR 450mm
- SDS908450006** GR 500mm
- SDS908455006** GR 550mm

199mm High Modern Box

NEW



Set comprises of 2 x Drawer Sides, 2 x Full Extension Drawer Slides, 2 x Front Connectors and 2 x Rear Connectors. Max weight 40kg.

- SDS919925006** GR 250mm
- SDS919930006** GR 300mm
- SDS919935006** GR 350mm
- SDS919940006** GR 400mm
- SDS919945006** GR 450mm
- SDS919950006** GR 500mm
- SDS919955006** GR 550mm

**CONTACT US
NOW FOR
TRADE PRICES:
01483 237621**

sales@unico.uk.com

Duo Stay



The Duo Stay can be used as a lid stay or a drop down flap stay. Easily adjustable from 0kg to maximum capacity using an allen key. Suitable for wooden doors. The instant grip action of the stays braking mechanism does not allow sagging when the lid is let go by the user. Suitable for up to 6kg.

UST366701061 NP

Box Lid Stay

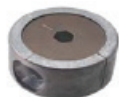


Screw mounted to side panel and lid. Non-handed design. Spring holds lid in position. For heavier lids two stays should be used.

UST862000003 BL
UST862000004 WH

KD FITTINGS

Fuerte System Housing



UKD081400001 SC

Mini Cam



SKD263101601 SC 16mm Panels
SKD263101801 SC 18mm Panels
SKD263101901 SC 19mm Panels

34mm M6 Threaded Bolt



SKD263001001 SC

Fuerte System Dowels



UKD081400160 ZP 64mm
UKD081400260 ZP 84mm

34mm Eurothread Bolt



SKD263203401 SC

'D' Fix Cam



For 19mm Panels

SKD242033061 NP Cam
SKD242033160 NP Bolt

Corner Bracket



SMI033800060 ZP 51x51mm
SMI024900060 ZP 63x63mm

Angle Stretcher Plate



Slots 17x5mm. 25x30x38mm Overall.

SKD031500101 SC
SKD031500160 ZP

Worktop Connectors



SKD121412660 ZP 65mm
SKD121412560 ZP 150mm

2 Piece Centre Rail Bed Connectors



1 Slotted and 1 hooked piece per set.

UKD800100019 YZ

Two Piece Flush Mounts

Overall thickness 2.5mm

SKD041800060 ZP 35x35mm
SKD041800160 ZP 43.5x38mm



Keyhole Plates



Single 41mm overall. Double 75mm overall.

UKD051400060 ZP Single
UKD051400260 ZP Double

Taper Connectors

Two piece steel connectors. Overall thickness 7mm. Overall height 100mm.

SKD202040001 SC



8 Piece Bed Connectors

4 Slotted and 4 hooked pieces per set

UKD201200001 SC 100mm



Maxi Luna Bed Set



Heavy duty bed assembly fittings for 40mm hole.

- UKD062800001** SC Halfmoon Washer
- UKD062800120** YZ M8x95mm Threaded Bolt
- UKD062801220** YZ M8 Allen Head Bush
- UKD062800320** YZ M8 Hex Nut
- UKD062800720** YZ M8 Spanner
- UKD062800505** BR Cover Cap

Mini Luna Washer

For use with the M6 Bolts.

UKD062600060 ZP



M6 Allthreads



- UKD126162601** SC 26mm
- UKD126163201** SC 32mm
- UKD126163801** SC 38mm
- UKD126164401** SC 44mm
- UKD126164801** SC 48mm
- UKD126165101** SC 51mm
- UKD126165701** SC 57mm
- UKD126166301** SC 63mm
- UKD126167001** SC 70mm
- UKD126167601** SC 76mm
- UKD126113520** SC 135mm

M6 'D' Type Insert



- UKD061601320** YZ 13mm
- UKD061601619** YZ 16mm
- UKD061602020** YZ 20mm

M6 Threaded Bolts



M6 flat head bolts with 4mm Allen head.

- UKD001563020** YZ 30mm
- UKD001564020** YZ 40mm
- UKD001564061** NP 40mm
- UKD001565020** EB 50mm
- UKD001565061** NP 50mm
- UKD001566020** EB 60mm
- UKD001566061** NP 60mm
- UKD001567020** YZ 70mm
- UKD001567061** NP 70mm
- UKD001568020** YZ 80mm
- UKD001510020** YZ 100mm
- UKD001512020** YZ 120mm

M6 Cross Dowel

- UKD125061460** ZP 14mm
- UKD125062060** ZP 20mm
- UKD125063060** ZP 30mm



Brass Heads

M6 x 11.75mm

- UKD101262221** EB
- UKD101262261** NP



Unita Screws



Either Pozzi or Allen head.

- UKD105105060** ZP 5x50mm Pozzi
- UKD105005060** ZP 7x50mm Pozzi
- UKD105106060** ZP 7x60mm Pozzi
- UKD105105160** ZP 5x50mm Allen
- UKD105003160** ZP 7x30mm Allen
- UKD105005160** ZP 7x50mm Allen
- UKD105100007** BE Plastic Cover Cap

22mm Oval Tubing

3m lengths. 22x15x0.70mm.

UWF065502261 NP



Oval End Support

Suitable for 22mm and 30mm Oval Tubing.

- UWF064703020** EB 2 Hole
- UWF064713061** NP 3 Hole



Round Tubing

3.66m lengths.

- UWF065613464** CP 19mm
- UWF065611064** CP 25mm



Raised Shelf Strip

Length 1829mm.

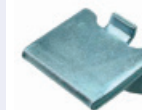
- SSF747200001** SC Ali
- SSF747200020** EB Steel
- SSF747200145** FB Ali
- SSF747200060** ZP Steel



Shelf Stud

For use with SSF7472 Raised Shelf Strip.

- SSF747400040** FB
- SSF747400060** ZP



Shelf Stud With Hole

For use with SSF7472 Raised Shelf Strip.

- SSF747300020** EB
- SSF747300040** FB
- SSF747300060** ZP



30mm Oval Tubing

3m lengths. 30x15x0.70mm.

UWF065503061 NP



Oval Centre Support

Suitable for 22mm and 30mm Oval Tubing.

UWF950355864 CP



Rod End Socket

- UWF064503464** CP 19mm
- UWF064501064** CP 25mm



Raised Shelf Strip

Length 2m. 16x6mm. For flush or surface mounting.

- SSF294100120** EB
- SSF294100161** NP



Plain Shelf Stud

For use with SSF2941 Raised Shelf Strip.

- SSF300200220** EB
- SSF300200160** ZP



Shelf Stud With Spigot

For use with SSF2941 Raised Shelf Strip.

SSF300201060 ZP



Magic Wires



3mm thick.

USF064000060 ZP 127mm
USF064000160 ZP 196mm
USF064000260 ZP 246mm

Shelf Stud For Glass



For use in 5mm hole.

USF314608161 NP

Shelf Stud



For use in 5mm hole.

USF033200020 EB
USF033200061 NP

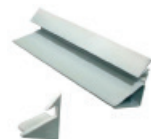
Shelf Stud & Socket



Stud 6mm hole. Socket 7mm hole.

SSF011100020 EB Stud
SSF011100061 NP Stud
SSF011100120 EB Socket
SSF011100161 NP Socket

Shelf Strip



2440mm long. For 15mm wooden shelves. Includes 2 end pieces.

USF990240807 BE
USF990240904 WH

Glass Shelf Stud



With metal pin. 5mm hole.

SSF102100001 SC

Shelf Stud & Socket



Stud 7mm hole. Socket 7.8mm hole.

USF120000020 EB Stud
USF110000020 EB Socket

Metal Tie Rails



SWF503000061 NP 300mm
SWF503500020 EB 350mm
SWF503500061 NP 350mm
SWF504000020 EB 400mm

Square Glass Door Hinge

No boring required. Glass thickness 4-5mm. Sold in pairs.

UHI170000064 CP
UHI170000065 MCP



Square Lock For Single Glass Door

No boring required. Glass thickness 4-5mm. Keyed to differ.

UHI170000464 CP
UHI170000465 MCP



Square Lock Striker For Single Glass Door

Knock in dowels 5mm dia x 9mm long.

UHI170000864 CP
UHI170000865 MCP



Ratchet Lock

100mm. 4-7mm glass. No boring. N/MK.

ULO015501464 CP Differ
ULO015500264 CP KA



Lock For Single Hinged Glass Door

6mm glass. No boring required. N/MK.

ULO091800064 CP Differ
ULO091810164 CP KA
ULO091800065 MCP Differ



95° Soft Close Mini Glass Door Hinge

Boring 26mm. 4-6mm glass. Complete with plate.

UHI072900061 NP Full Overlay
UHI072900161 NP Half Overlay
UHI072900261 NP Inset
UHI072900364 CP Round Cover
UHI072900464 CP 'D' Cover



Badge Glass Door Hinge

No boring required. Glass thickness 4-5mm. Sold in pairs.

UHI180000064 CP
UHI180000065 MCP



Badge Lock For Single Glass Door

No boring required. Glass thickness 4-5mm. Keyed to differ.

UHI180000064 CP
UHI180000065 MCP



Badge Lock Striker For Single Glass Door

Knock in dowels 5mm dia x 9mm long.

UHI180000864 CP
UHI180000865 MCP



Sliding Glass Door Lock With Keyhole

7mm glass max. Boring 16mm.

ULO015401361 NP Differ
ULO015401461 NP KA



Striker For Double Doors

For use with the ULO0918 Single Glass Door Lock. Striker only.

ULO091800164 CP
ULO091800165 MCP



100° Soft Close Maxi Glass Door Hinge

Boring 35mm. 4-6mm glass. Complete with plate.

UHI073000061 NP Full Overlay
UHI073000161 NP Half Overlay
UHI073000261 NP Inset
UHI073000364 CP Round Cover
UHI073000464 CP 'D' Cover



3m Bifold Top Track

NEW



Top track for use with SDF6344 Bifold Rollers.
SDF634400001 SC

Bifold Top Roller & Hinge 20kg

NEW



Suitable for up to 20kg doors.
SDF634400161 NP

Bifold Top Roller & Hinge 40kg

NEW



Suitable for up to 40kg doors.
SDF634400261 NP

Bifold Centre Door Hinge



UHI030100060 ZP

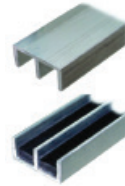
Glass Clamp



Suitable for 6-8mm glass. Mount on flat surfaces.
SMI433500161 NP

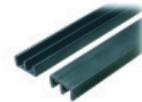
Twin Sliding Door Track

Length 2m. For glass, plywood or hardwood. Plastic insert in lower track. Max weight 11kg. Max glass size 6mm.



SDF003400066 PA Bottom
SDF003500066 PA Top

Twin Sliding Door Channel



For sliding glass doors. 2m long. Max glass size 6mm.

SDF007500203 BL Bottom
SDF007600203 BL Top

Track For Wood Sliding Door System



25m coil.

SDF061000004 WH
SDF061000005 BR

Screw On Wood Sliding Door 3mm Guide

Installed by boring a 30x10mm hole and securing with screws.



SDF061200304 WH
SDF061200305 BR

Screw On Wood Sliding Door Roller



Installed by boring a 30x10mm hole and securing with screws.

SDF061100004 WH
SDF061100005 BR

Table Cleat



Surface mounted.
UTF400000021 EB

Recess Mounted Folding Leaf Hinge



For 18mm or 22mm board.
SHI200001820 EB 18mm
SHI200002219 YZ 22mm

Table Click Catch



For connecting tables and table leaves. Concealed when not in use.

SCA240311060 ZP

Surf Table Connector

NEW



SCA240310065 MCP

Table Flip Bracket



SHI300001820 EB

Locator Pins



8mm diameter.

UKD114000005 BR
UKD114000021 EB

90° Click Catch

NEW



SCA240311460 ZP

Coffee Table Lift Mechanism



Converts a coffee table into a work desk.

UTF500045003 BL Small
UTF500091403 BL Large

LEG SYSTEMS

710x60mm Chrome Leg Set

Set of 4 x legs, 4 x brackets and 4 x 30mm adjustable feet.

SLF600067364 CP



Plinth Height Adjuster 100kg

Height 30mm. Adjustment 20mm. Max weight 100kg.

SLF030000060 ZP



Plinth Height Adjuster 150kg

Height 30mm. Adjustment 20mm. Max weight 150kg.

SLF030000160 ZP



Partition Adjuster

M10x50mm adjuster. Max weight 350kg.

SLF015600060 ZP



Screw On Plate

For use with threaded height adjusters. M8 thread. Max weight 500kg.

SLF016700260 ZP



Square Leg Bracket

Either M8 or M10 thread.

SLF014901260 ZP M8
SLF014901360 ZP M10



Corner Leg Bracket

Either M8 or M10 thread.

SLF014901060 ZP M8
SLF014901160 ZP M10



Adjustable Legs

Ideal for kitchen plinths. You will receive half the amount of clips and brackets to legs ordered.

SLF400410003 BL 100mm
SLF400415003 BL 150mm



Height Adjuster

M8 thread.

SLF500803560 ZP 35mm
SLF500805060 ZP 50mm
SLF500806060 ZP 60mm
SLF500808060 ZP 80mm
SLF500810060 ZP 100mm



Plastinail

SLF187501601 SC 16mm
SLF187501901 SC 19mm



Glides

6mm prongs.

SLF023401661 NP 16mm
SLF023401961 NP 19mm
SLF023402261 NP 22mm
SLF023403261 NP 32mm



Corner Castor

29mm wheel.

SLF005002701 SC



 **UNICO**
COMPONENTS

CALL: 01483 237621

EMAIL: sales@unico.uk.com

WEB: www.unico.uk.com